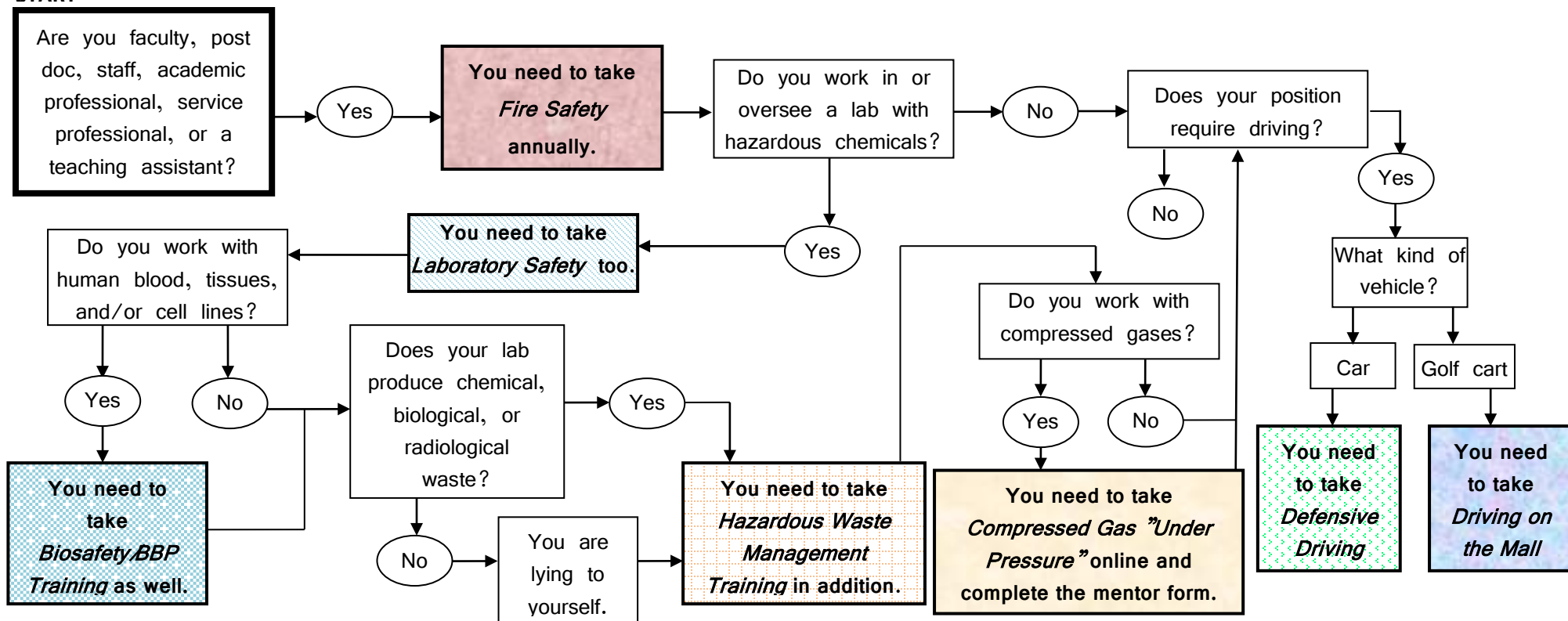


# Laboratory Safety Training Chart - Aug. 2017

START



Sign up for training and check your records at <https://cfo.asu.edu/ehs-training>

**Fire Safety Training**  
 Frequency: Initially upon hire and annually thereafter.

**Aug. Training Dates**  
 Fri 11<sup>th</sup>: 2-3 PSH-153  
 Mon 14<sup>th</sup>: 10-11 LSE-104  
 Tue 15<sup>th</sup>: 10-11 LSE-104  
 Tue 16<sup>th</sup>: 9-9:30 AGBC115 (Poly)  
 Wed 16<sup>th</sup>: 10-11 LSE-104  
 Fri 18<sup>th</sup>: 1-2 HLTHS-157 (DPC)  
 NOTE: DPC = Downtown

**Laboratory Safety Training**  
 Frequency: Initially upon hire and annually thereafter.

**Aug. Training Dates**  
 Fri 11<sup>th</sup>: 9-11 SCOB-210  
 Mon 14<sup>th</sup>: 1-3 LSE-104  
 Tue 15<sup>th</sup>: 1-3 LSE-104  
 Tue 15<sup>th</sup>: 9:30-11 AGBC115 (Poly)  
 Wed 16<sup>th</sup>: 1-3 LSE-104  
 Fri 18<sup>th</sup>: 9-11 HLTHS-157 (DPC)

**Hazardous Waste Management**  
 Frequency: Initially upon hire and annually thereafter.

**Aug. Training Dates**  
 Fri 11<sup>th</sup>: 11-12 LSE-106  
 Mon 14<sup>th</sup>: 3-4 LSE-106  
 Tue 15<sup>th</sup>: 3-4 LSE-106  
 Tue 15<sup>th</sup>: 11-12 AGBC115 (Poly)  
 Wed 16<sup>th</sup>: 3-4 LSE-106  
 Fri 18<sup>th</sup>: 11-12 HLTHS-157 (DPC)

**Defensive Driving**  
 Frequency: Within 3 months of assignment required, operation of ASU vehicle and refresher every four years.

**Aug. Training Date**  
 Wed 16<sup>th</sup>: 1-3 LSE-106

**Biosafety/BBP Training**  
 Frequency: Initially upon hire and an annual refresher.

**Aug. Training Dates**  
 Tue 15<sup>th</sup>: 1-3 AGBC115 Poly  
 Wed 16<sup>th</sup>: 1-3 BioD - B105

**Compressed Gas "Under Pressure"**  
 Frequency: One-time training. Go to: <https://cfo.asu.edu/ehs-training> and click on the "Blackboard Classes" tab to enroll; complete mentor form back in lab; submit to EHS to be fully certified.

**Driving on the Mall**  
 Frequency: Prior to driving an ASU golf carts and refresher every four years.

**Aug. Training Dates**  
 Fri 11<sup>th</sup>: 10-11:30 PSH-152  
 Wed 16<sup>th</sup>: 10-11:30 LSE-106